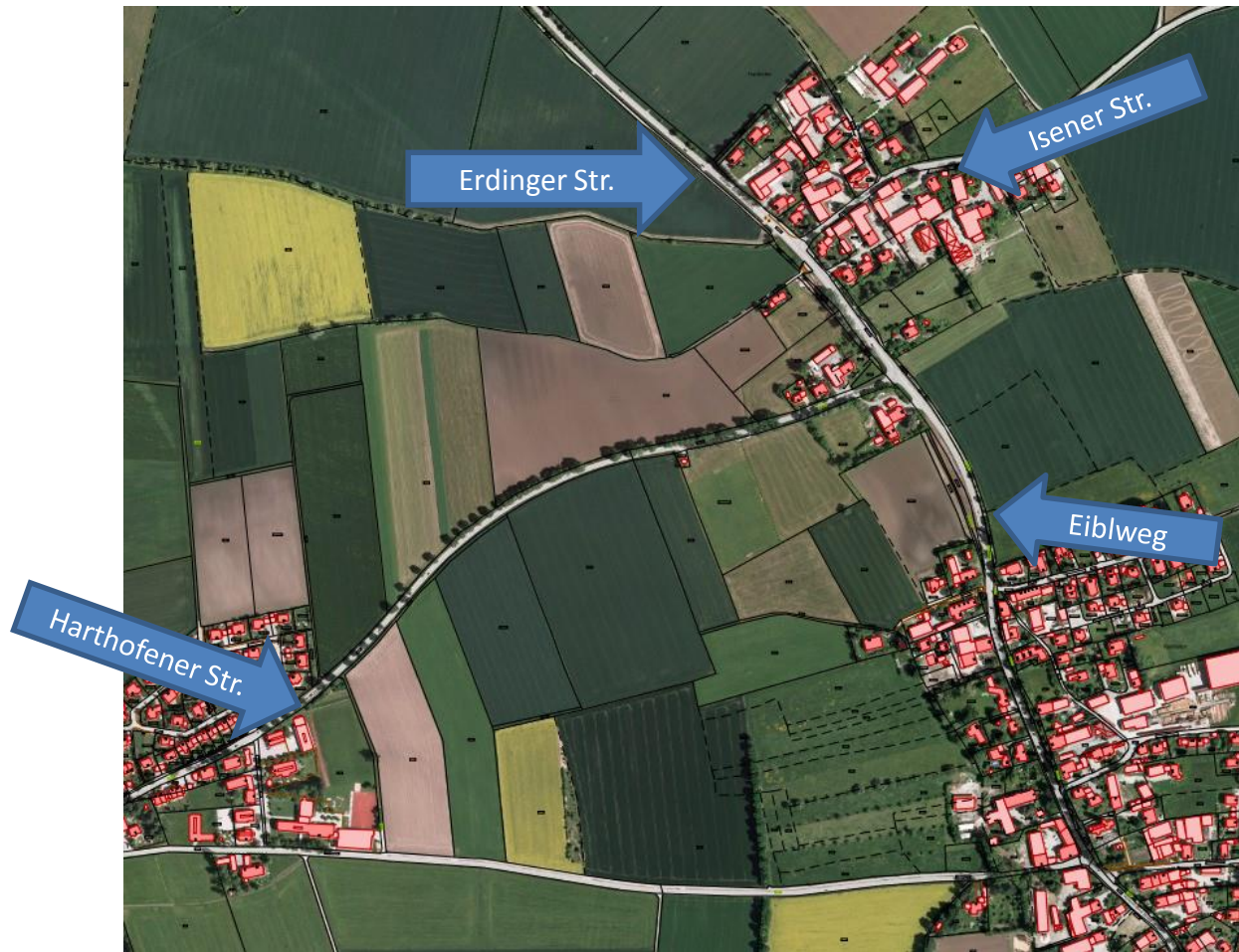


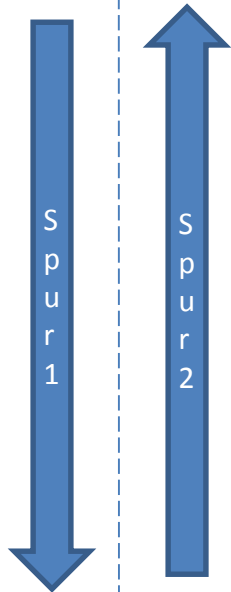
# Verkehrszählung 2015 – Gemeinde Pastetten



Erding

## Erdinger Str. (Harthofen) Ortstafel von ED kommend

Zeitraum: 20. – 27.11.2015 (2013/2012/2011)



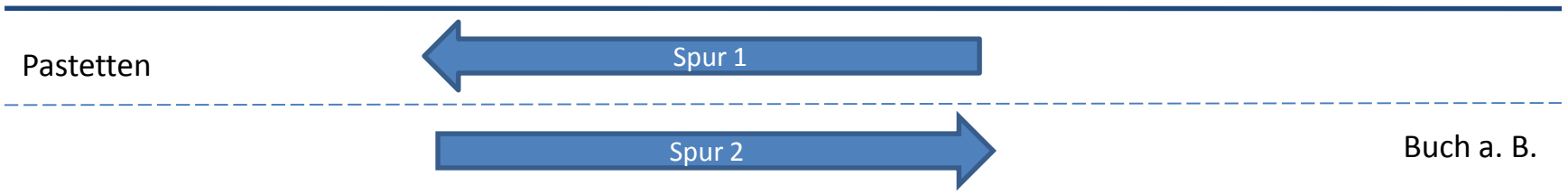
Spur 1:	41.402 PKW/LKW	(44.797/42.533/45.480 PKW/LKW)
Spur 2:	38.460 PKW/LKW	(38.403/37.582/30.584 PKW/LKW)

Forstern



## Isener Str. (Harthofen) ggü. Hausnummer 8

Zeitraum: 20. – 27.11.2015 (2013/2012)

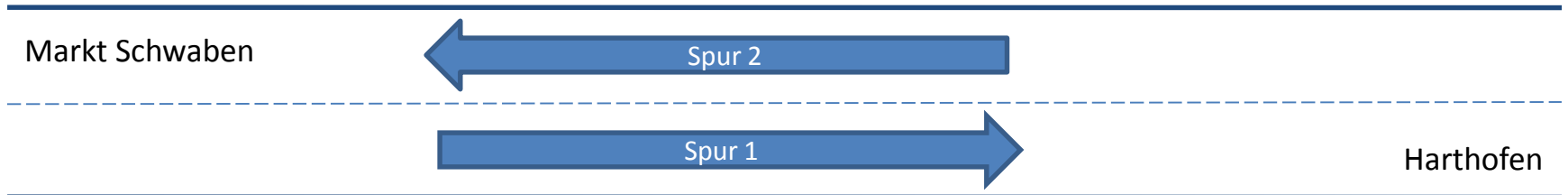


Spur 1: 23.029 PKW/LKW (28.501/18.642 PKW/LKW)

Spur 2: 22.811 PKW/LKW (26.109/21.078 PKW/LKW )

# Harthofener Str. (Bauhof)

Zeitraum: 20. – 27.11.2015 (2013/2012)



Spur 1: 9.866 PKW/LKW (11.303/10.176 PKW/LKW )

Spur 2: 10.308 PKW/LKW (10.751/12.859 PKW/LKW )



## Eiblweg (Reithofen)

Zeitraum: 20. – 27.11.2015 (2013/2012/2011)

Spur 1: 24.335 PKW/LKW (15.431/24.858/27.981 PKW/LKW)

Spur 2: 24.729 PKW/LKW (21.327/28.080/34.749 PKW/LKW)

